

OVERVIEW

Kugelhahn Müller flanged ball valves feature maintenance-free and durable adjustable live-loaded PTFE stem sealing or O-Ring sealing system with certified packing.

This design has proven to ensure an extreme long service life and meets the highest quality requirements in the Chemical Industry worldwide.

A wide range of accessories and special materials enable high flexibility and ensure customer requirements.



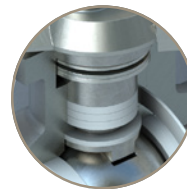
APPLICATIONS

- > Chemical gases
- > Chemical fluids
- > Petrochemicals
- > Food & Beverage (FDA)
- > Pharmaceutical
- > Water and Wastewater treatment

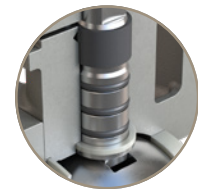
MEDIA

- > Acids
- > Alkalis
- > Corrosive Chemicals
- > Gases
- > Hydrogen
- > Oxygen
- > Water

PTFE PACKING



O-RING SEALING



SPECIFICATIONS

Size Range	DN 15 to 200
Temperature Range	PTFE: -60°C to 200°C
	O-Ring: -25°C to 200°C
Maximum Operating Pressure	40 bar
Body Style	Two-piece flanged
Port	Full Port
Tightness Test	EN 12266-1 Rate A

DESIGN STANDARDS

Valve Design	EN 12569 EN 593 NE 167
Material Standard	EN 16668 AD2000 W0
Food Contact	EC 1935
Marking	EN 19 DIN EN IEC 61406* DIN 91406*
Top Flange	ISO 5211
Flange Drilling	EN 1092-1 PN 10, 16, 25, 40
Face-to-Face	EN 558 Series 1 Series 27
Testing Standard	EN 12266-1

NOTES

Other flange patterns are available on request.
Customer specification and standards on request.
* AutoID available shortly.

MATERIAL OPTIONS¹

Body	Carbon Steel (EN 1.0619)
	Stainless Steel (EN 1.4408)
Ball	Stainless Steel (EN 1.4408)
	Stainless Steel (EN 1.4404)
Stem	Stainless Steel (EN 1.4462)
Seat	PTFE/25% GFR
	PTFE/50% VA
	Virgin PTFE (FDA)
Packing	PTFE
	Viton® (FKM)

NOTES

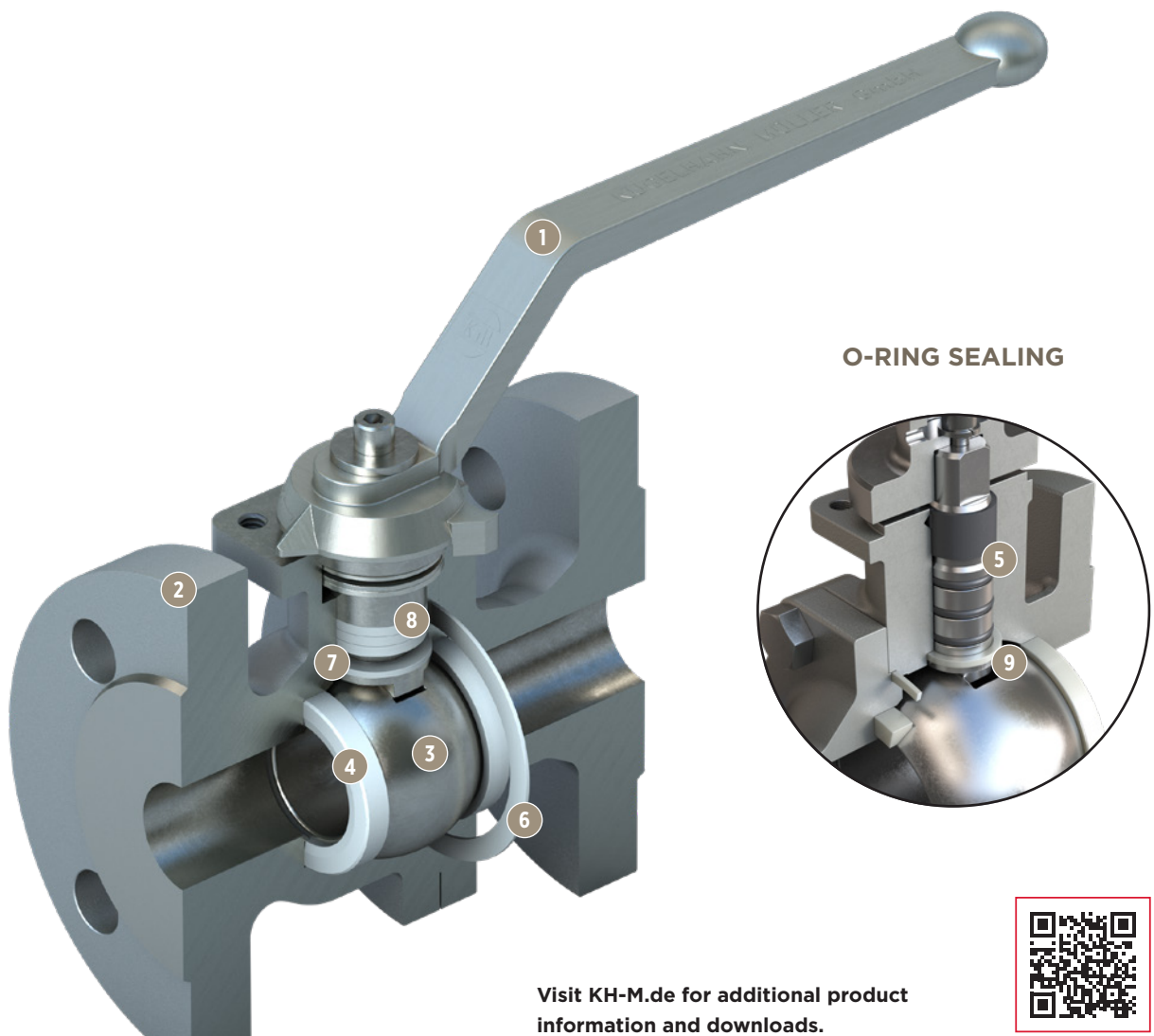
¹ Other materials are available on request.

CERTIFICATIONS AND APPROVALS

Declaration of Conformity	CE UKCA
Pressure Equipment Directive	2014/68/EU PE(S)R
Machinery Directive	2006/42/EC
Atmospheric Explosion	ATEX 2014/34/EU
Fugitive Emissions	ISO 15848-1 TA Luft 2021
AutoID / ID Link	DIN 91406 IEC 61406
Safety Integrity Level	IEC 61508 Parts 1-2 and 4-7:2010
Fire-Safe (optional)	ISO 10494 API 607

FEATURES & BENEFITS

- 1 **HAND LEVER:** Stainless steel lockable hand lever with a position indicator.
- 2 **BODY:** Robust two-piece body design suitable for heavy-duty applications in multiple industries. A wide range of flange connections are available.
- 3 **BALL:** Floating full bore design made of polished stainless steel.
- 4 **SEAT:** Seat design ensures bidirectional zero-leakage sealing under all pressure and temperature conditions.
- 5 **STEM:** Heavy-duty, blowout-proof stem with “Double D” connection according to ISO 5211 for mounting of various hand levers, adapters, actuators and stem extensions.
- 6 **BODY SEAL:** Chambered body seal design to ensure outstanding sealing integrity.
- 7 **STEM PACKING:** Custom designed high integrity stem packing arrangement that combines a self-adjusting primary and secondary seal in order to ensure consistent torque and highest possible tightness according to ISO 15848-1.
- 8 **PTFE PACKING:** The PTFE sealing system features a preloaded Belleville spring design with the benefit of optional re-adjustment.
- 9 **O-RING PACKING:** The O-Ring sealing system features an O-Ring arrangement of at least three O-Rings.



Visit [KH-M.de](https://www.kh-m.de) for additional product information and downloads.

