

OVERVIEW

Double Acting Pneumatic Actuators engineered for dependable linear actuation of all Bray knife gate valves.

Rugged construction enables fast installation and long-term serviceability.

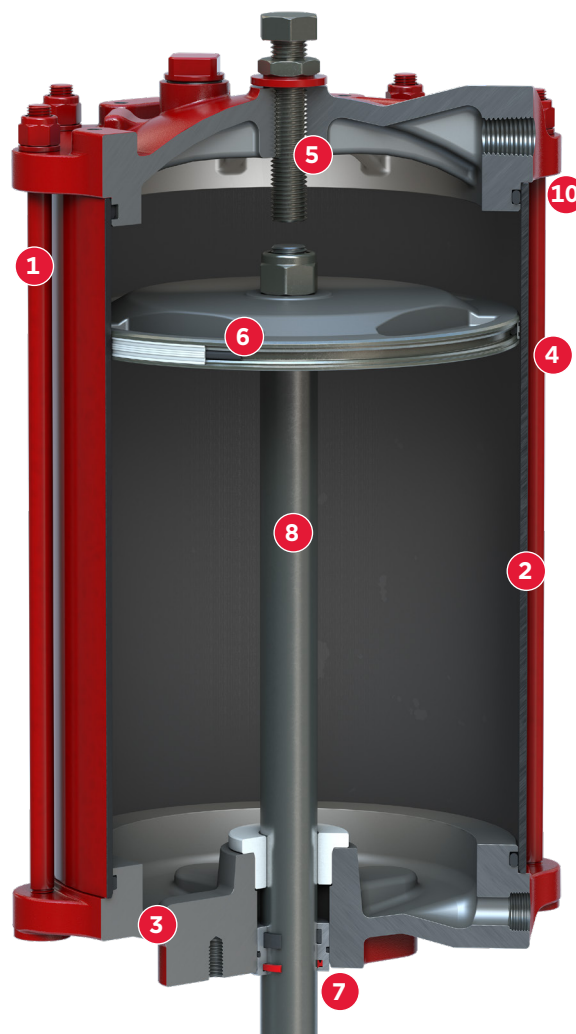
Field-interchangeable design simplifies retrofit of manual valves on site.

SPECIFICATIONS

Size Range	2" to 32" 50mm to 800mm Cylinder Diameter
Temperature Rating	Standard Trim: 194°F (90°C) Steel Cylinder & Viton Seals: 392°F (200°C)
Pressure Rating	101.5 psi (7 bar) maximum
Air Supply Pressure	101.5 psi (7 bar) maximum
Cylinder Tube Material	FRP (Fiberglass Reinforced Plastic) Steel
Stroke Length	To suit valve travel requirements
Design	Double acting linear pneumatic actuator

FEATURES

- 1 Lightweight and non-corrosive fiberglass reinforced plastic cylinder tube offers high strength, impact and corrosion resistance with lower weight ideal for horizontal mounting.
- 2 Lubricated cylinder for increased lubricity and low friction enabling operation with or without air lubrication.
- 3 Available in side-mount (KCS) and top-mount (KCT) configurations.
- 4 External tie-rods allow easy inspection, maintenance and replacement of parts. They also allow contained release of force in the event of over-pressure.
- 5 Adjustable travel-stop for the open position.
- 6 Energized PTFE piston seal reduces friction for long, trouble-free operation.
- 7 Standard carbon filled PTFE guide and polyurethane wiper seal cleans the piston rod during travel and protects against ingress of media.
- 8 Standard stainless steel piston rods for superior corrosion protection.
- 9 Field-interchangeable on all Bray knife gate and slurry valves. No additional mounting hardware required.
- 10 Elastomer seals are provided on all sealing surfaces to prevent leakage of compressed cylinder air.



STANDARD CONSTRUCTION

Cylinder	FRP
End Caps	Ductile Iron
Piston	Ductile Iron
Tie Rods	Stainless Steel
Piston Rod	Stainless Steel
Piston Seal	Energized PTFE
End Cap Seals	Nitrile
Neck Seal Housing	Aluminum
Wiper Seal	Polyurethane
Guide	Carbon-filled PTFE

OPTIONS

Trim for corrosive environment

Trim for elevated temperature environment

Manual handwheel override

Bray Pneumatic Fail Safe Unit

ACCESSORIES

Control Panel

Pneumatic Valves

Air Filter Regulator

Solenoid Valve

Volume Booster

Quick Exhaust

Limit Switches

Positioner

Variable Clevis for extended stroke lengths

Dual rod seal for higher cycle life and enhanced ingress protection

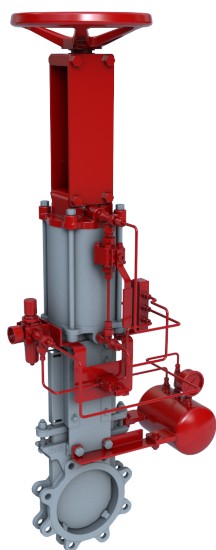
MATERIAL OPTIONS

Cylinder	Carbon Steel
End Caps	Stainless Steel
Piston Rod	316 Stainless Steel
Piston Seal	Energized PTFE
End Cap Seals	Viton
Wiper Seal	Viton

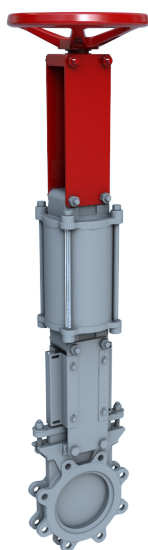
Additional material options may be available upon request. Consult factory for availability.

OPERATING SPEED

Recommended stroking speed is 1" / sec (25mm/sec), which is dependent on accessories and tubing used. Please consult factory for specific recommendations.



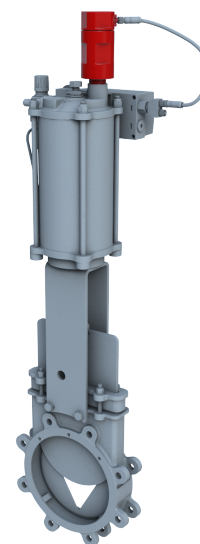
PNEUMATIC FAILSAFE



MANUAL OVERRIDE



**ELECTRO PNEUMATIC
POSITIONER**



**LINEAR POSITION
SENSOR**