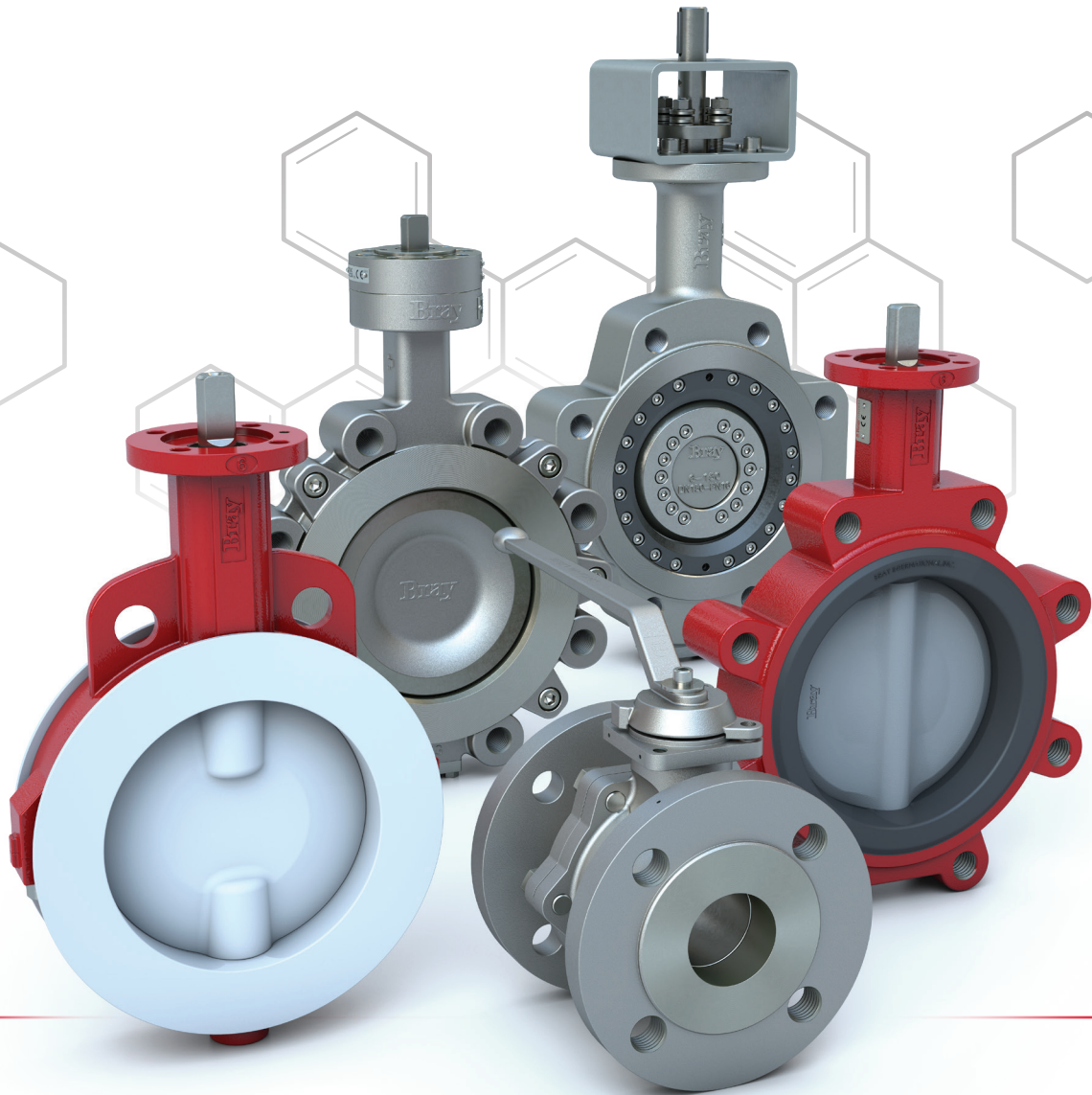




OUR ELEMENT

SOLUTIONS FOR THE CHEMICAL INDUSTRY



 **Bray**[®]

BRAY.COM

THE HIGH PERFORMANCE COMPANY

Excellence Quality Trust

Explore Our Elements

PASSION FOR SOLUTIONS

COMMITMENT, SAFETY, RELIABILITY & SUSTAINABILITY

These elements are our passion to design, engineer, and manufacture our new Cx Line products — offering valve solutions that consistently deliver results for your unique process conditions.

All products for the Cx Line feature a digital valve identification tag which enables a link with the end user's systems. Together with the compliance of all necessary standards, these products will be your preferred choice.

DIGITAL TAG

The electronic tagging system — **Bray DIGI-ID™** — ensures that each valve is uniquely and easily identifiable by simply scanning the QR Code on the product identification tag. This allows the operator to gain instant access to all relevant product information. This solution is in accordance with the DIN EN IEC 61406 (DIN Spec 91406) standard.

Benefits of Bray DIGI-ID™



QR CODE

Engraved on Valve ID Tag
Captive and Unique
Easily Scannable



PORTAL

Responsive Design
Instant Access
Multi-lingual
DIN EN IEC 61406 Conformance



DOWNLOADS

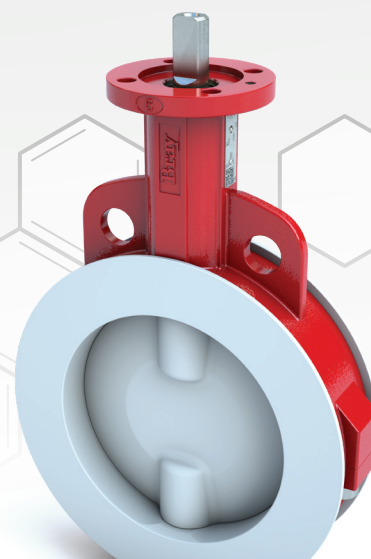
Declaration of Conformity
Sales Data Sheet
Technical Sales Manual
Installation, Operation and Maintenance Manual

2-Cx

PTFE-Lined

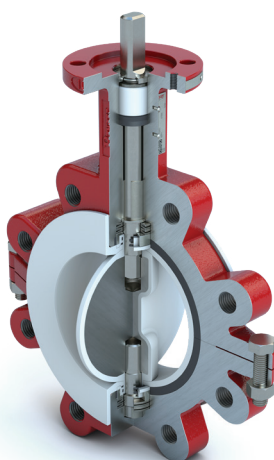


SCAN ME
FOR A CLOSER LOOK



KEY ELEMENTS

- > Live-loaded, self-adjusting stem sealing system with certified packing
- > Unique seat geometry permits lower torques and reduces seat wear
- > Seat energizer extends completely around the seat for zero leakage
- > Virgin-PTFE lining (minimum 3mm) for superior chemical resistance
- > Extended neck to allow for simplified pipe insulation



2-Cx
Lug

| | |
|-----------------------------------|----------------------------------------------|
| Size Range¹ | DN 50 to 600 |
| | NPS 2 to 24 |
| Temperature Range | -20°C to 200°C |
| Maximum Operating Pressure | 10 bar |
| Body Style | Wafer Lug |
| Flange Drilling | EN 1092-1: PN 10 |
| Face-to-Face | EN 558 Series 20 |
| Top Flange | ISO 5211 |
| Tightness Test | EN 12266-1: Rate A |
| Certifications | CE: PED 2014/68/EU |
| | SIL 3 capable |
| Fugitive Emissions | ISO 15848-1 |
| | TA-Luft 2021 |
| Approvals | ATEX 2014/34/EU |
| Compliance | NE 167 AD2000 DIN EN IEC 61406 EC 1395 |

NOTE

Other sizes and specifications on request.

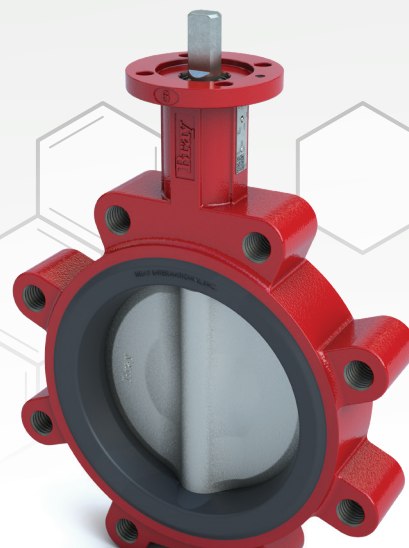


3-Cx

Resilient Seated



SCAN ME
FOR A CLOSER LOOK



KEY ELEMENTS

- > Molded-in seat design for durability and reliability
- > Lug version allows for bi-directional sealing at full rated pressure
- > Precision profiled disc sealing edge extends the valve life by reducing seat wear
- > Upper and lower stem bearings reduce operating torque and increase reliability in high cycle applications
- > Reduction in torque enables optimized actuator selection resulting in cost savings over the valve's lifetime
- > Extended neck to allow for simplified pipe insulation



3-Cx
Wafer

| | |
|----------------------------|----------------------------------------------|
| Size Range | DN 50 to 600 |
| Temperature Range | -20°C to 121°C |
| Maximum Operating Pressure | 16 bar |
| Body Style | Wafer Lug |
| Flange Drilling | EN 1092-1: PN 10 PN 16 |
| Face-to-Face | EN 558 Series 20 |
| Top Flange | ISO 5211 |
| Tightness Test | EN 12266-1: Rate A |
| Certifications | CE: PED 2014/68/EU |
| | SIL 3 capable |
| Fugitive Emissions | ISO 15848-1 |
| | TA-Luft 2021 |
| Approvals | ATEX 2014/34/EU |
| Compliance | NE 167 AD2000 DIN EN IEC 61406 EC 1935 |

NOTE

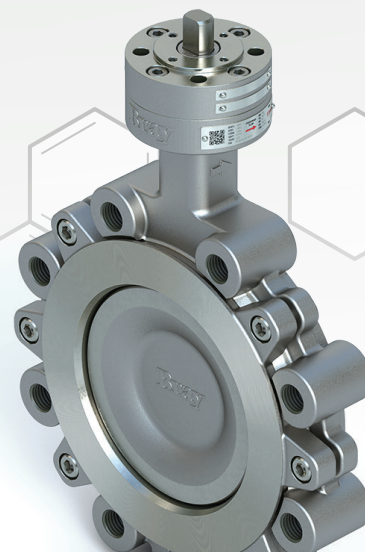
Other sizes and specifications on request.

4-Cx

Double Offset

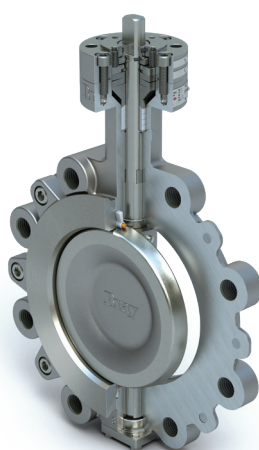


SCAN ME
FOR A CLOSER LOOK



KEY ELEMENTS

- > Designed to deliver quality, value, and reliability in the most demanding applications
- > Adjustable, live-loaded stem sealing system with low fugitive emissions certified packing
- > Double offset geometry reduces seat wear and extends valve service life
- > Dead-end service, with bidirectional sealing and uninterrupted flange surface
- > High strength, anti-blowout one-piece stem
- > Extended neck to allow for simplified pipe insulation



4-Cx
Lug

| | |
|---------------------------|----------------------------------------------|
| Size Range | DN 80 to 400 |
| Temperature Range | Carbon Steel: -10°C to 260°C |
| | Stainless Steel: -29°C to 260°C |
| Pressure Rating | PN 10 16 25 40 |
| Body Style | Wafer Lug |
| Flange Drilling | EN 1092-1 |
| Face-To-Face | EN 558 Series 20, Series 25 |
| Top Flange | ISO 5211 NE 14 |
| Tightness Test | EN 12266-1: Rate A |
| Certifications | CE: PED 2014/68/EU |
| | SIL 3 capable |
| Fugitive Emissions | ISO 15848-1 |
| | TA-Luft 2021 |
| Approvals | ATEX 2014/34/EU |
| Compliance | NE 167 AD2000 DIN EN IEC 61406 EC 1935 |

NOTE

Other sizes and specifications on request.

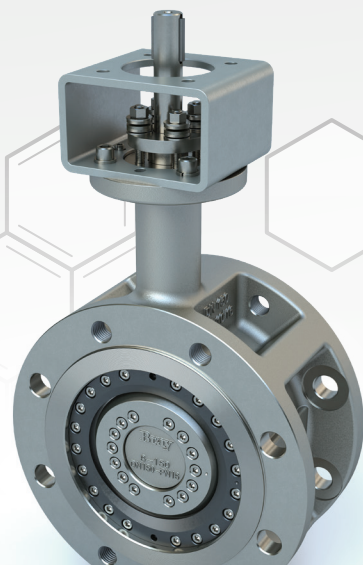


Tri Lok[®]-Cx

Triple Offset

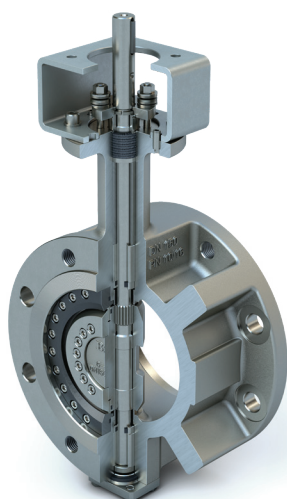


SCAN ME
FOR A CLOSER LOOK



KEY ELEMENTS

- > Designed for zero leakage, high reliability, and easy maintenance
- > Adjustable live-loaded stem sealing system with certified packing
- > Field replaceable sealing components
- > Engineered for critical service applications
- > Metal-to-metal sealing system is inherently fire-safe and capable of meeting zero-leakage requirements from critical service conditions
- > Splined stem connection offers maximum strength and minimizes hysteresis
- > Dead-end service, with bidirectional sealing and uninterrupted flange surface
- > Extended neck to allow for simplified pipe insulation



Tri Lok[®]-Cx
Double Flange

| | |
|--------------------|------------------------------------|
| Size Range | DN 80 to 600 |
| Temperature Range* | Carbon Steel: -10°C to 400°C |
| | Stainless Steel: -60°C to 400°C |
| Pressure Rating | PN 10 25 40 |
| Body Style | Lug Double Flange |
| Flange Drilling | EN 1092-1 |
| Face-To-Face | Lug: EN 558 Series 16 |
| | Double Flange: EN 558 Series 13 |
| Top Flange | ISO 5211 |
| Tightness Test | EN 12266-1: Rate A |
| Certifications | CE: PED 2014/68/EU |
| | SIL 3 capable |
| | UKCA |
| Fire Test | ISO 10497 |
| Fugitive Emissions | ISO 15848-1 |
| | TA-Luft 2021 |
| Approvals | ATEX 2014/34/EU |
| Compliance | NE 167 AD2000 DIN EN IEC 61406 |

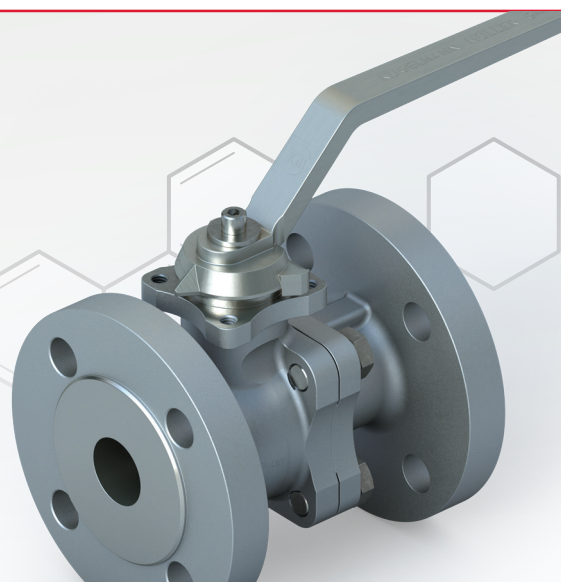
NOTE

Other sizes and specifications on request.

*For higher temperature requirements please contact your Bray team.

KM20/21

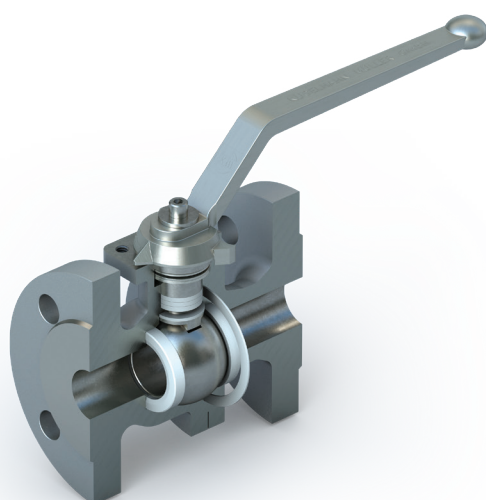
Flanged Ball Valve



SCAN ME
FOR A CLOSER LOOK

KEY ELEMENTS

- > Designed for maximum safety and durability
- > Adjustable live-loaded PTFE stem sealing or O-Ring sealing system with certified packing
- > Easy to maintain, fully repairable, and replaceable components
- > Robust construction with blowout proof stem design
- > Antistatic design as standard, to ensure operational safety
- > Various configuration options available, such as Fire-Safe, High-Temperature or Heat-Jacketed



KM21
PTFE Packing

| | |
|-------------------------------------|------------------------------------------------|
| Size Range | DN 15 to 200 |
| Temperature Range | PTFE: -60°C to 200°C O-Ring: -25°C to 200°C |
| Pressure Rating | PN 10 16 25 40 |
| Body Style | 2-piece flanged |
| Flange Drilling | EN 1092-1 |
| Face-To-Face | EN 558 Series 1, Series 27 |
| Top Flange | ISO 5211 |
| Tightness Test | EN 12266-1: Rate A |
| Declaration of Conformity | CE UKCA |
| Pressure Equipment Directive | 2014/68/EU PE(S)R |
| Machinery Directive | 2006/42/EC |
| Atmospheric Explosion | ATEX 2014/34/EU |
| Fugitive Emissions | ISO 15848-1 TA Luft VDI 2440 |
| Safety Integrity Level | IEC 61508 Parts 1-2 and 4-7:2010 |
| Fire-Safe (optional) | ISO 10494 API 607 |
| Compliance | NE 167 AD2000 DIN EN IEC 61406 EC 1935 |

NOTE

Other sizes and specifications on request.
Contact Kugelhahn Müller for more information.



SINCE 1986, BRAY HAS PROVIDED FLOW CONTROL SOLUTIONS
FOR A VARIETY OF INDUSTRIES AROUND THE WORLD.

VISIT **BRAY.COM** TO LEARN MORE ABOUT
BRAY PRODUCTS AND LOCATIONS NEAR YOU.

HEADQUARTERS

Bray International, Inc.

13333 Westland East Blvd.

Houston, Texas 77041

Tel: +1.281.894.5454

All statements, technical information, and recommendations in this bulletin are for general use only. Consult Bray representatives or factory for the specific requirements and material selection for your intended application. The right to change or modify product design or product without prior notice is reserved. Patents issued and applied for worldwide. Bray® is a registered trademark of Bray International, Inc.

© 2025 BRAY INTERNATIONAL. ALL RIGHTS RESERVED. BRAY.COM

EN_OVW_CxLINE_20250707



THE HIGH PERFORMANCE COMPANY

BRAY.COM