

**VAL-SRS Series
 Electric Actuators
 Spring Return**

FEATURES AND BENEFITS

High Output Force	<ul style="list-style-type: none"> Provides high close-off pressure ratings
Direct Mount to Bray SDF and STF Series Globe Valves	<ul style="list-style-type: none"> Eases installation and minimizes space requirements
Spring Return Operation	<ul style="list-style-type: none"> Returns valve to the open or closed position upon loss of power
User-Selectable Input Signals	<ul style="list-style-type: none"> Accepts current or voltage inputs
Manual Override Handle	<ul style="list-style-type: none"> Allows manual positioning during set-up or balancing
Visual and Electronic Position Indication	<ul style="list-style-type: none"> Provides position feedback and provides for remote monitoring



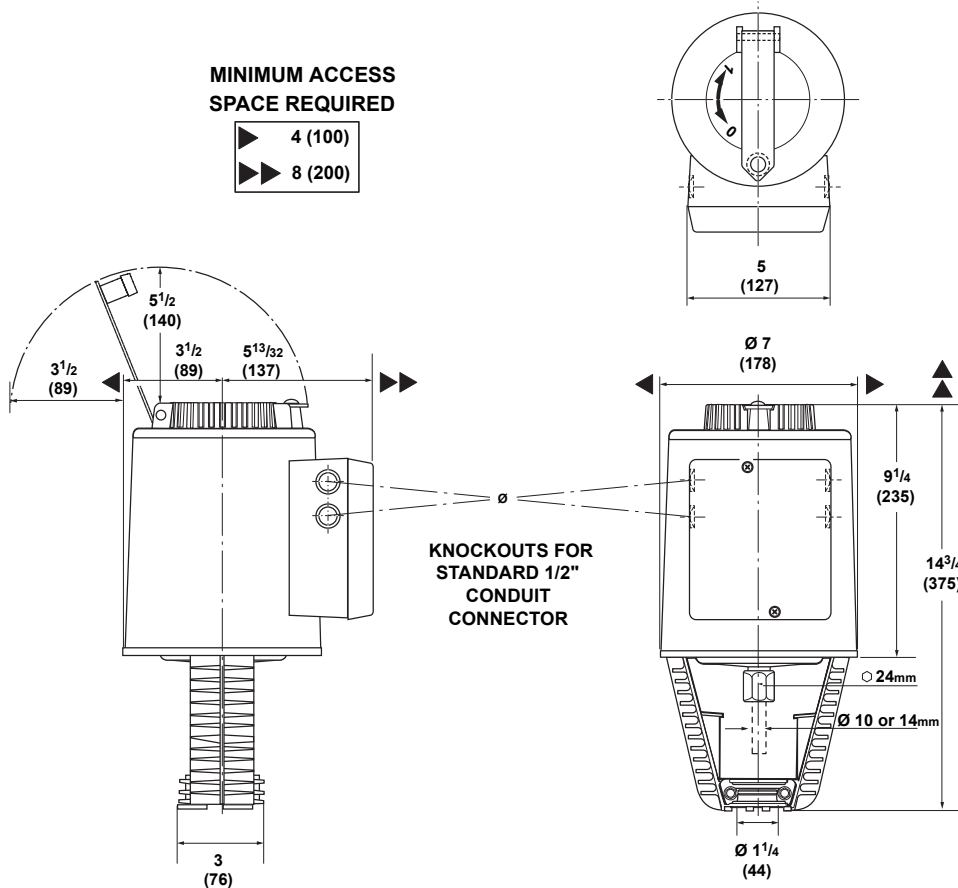
The VAL-SRS07 and -SRS15 Electro Hydraulic Actuators provide precise modulating control of Bray SDF and STF Series cast iron globe valves.

These actuators use electro hydraulic force to achieve superior close-off pressure ratings. The stroke of these actuators is up at the low input signal condition, and down in the high signal input condition.

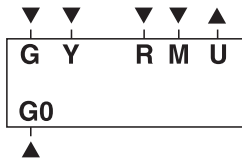
A weather shield is available to offer a degree of protection against rain, sleet and damage from external ice formation.

VAL-SRS Series
Electric Actuators
Spring Return

DIMENSIONS



WIRING



Connecting Terminals

- G, G0** Operating voltage 24 VAC
- G** System Potential (SP)
- G0** System Neutral (SN)
- Y** Control input 0 to 10 VDC
- R** Input for 4 to 20 mA or 0 to 1000 Ω remote setting unit
- M** Measuring neutral
- U** Output for 0 to 10 VDC or 4 to 20 mA measuring voltage

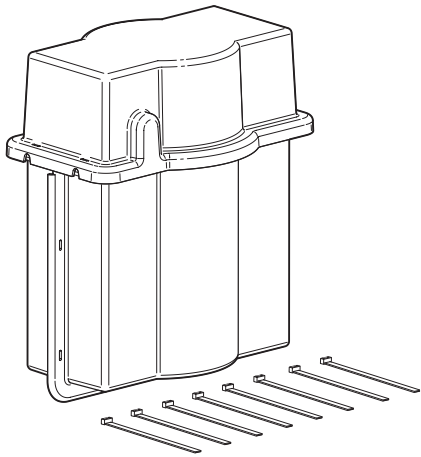
WARNING: Equipment Damage Hazard. Disconnect the power supply before wiring connections are made to prevent possible damage to the equipment. Make and check all wiring connections before applying power to the system. Short-circuited or improperly connected wires may result in permanent damage to the unit.

All wiring must be in accordance with applicable electrical code requirements. Input lines to the actuator must be wired correctly for the valve to move in the proper direction. Detailed in the applicable controller manual.

**VAL-SRS Series
 Electric Actuators
 Spring Return**

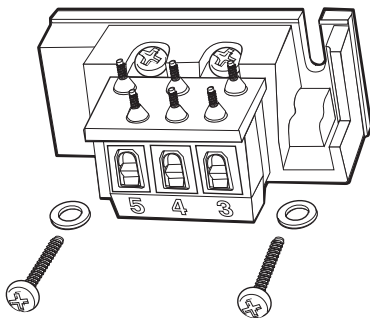
ACCESSORIES

Installation instructions are included with each accessory



Weather Shield

599-10065 The SRS actuator is UL listed to meet NEMA TYPE 3R requirements (a degree of protection against rain, sleet, and damage from external ice formation) when installed with this weather shield and outdoor-rated conduit fittings in the vertical position. See Service Kits for replacement Ultraviolet resistant cable ties.

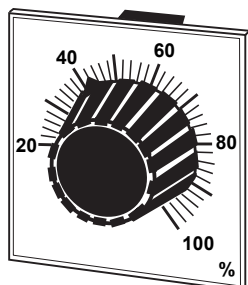


Auxiliary Switch

ASC1.6 The auxiliary switch sends a signal to indicate that the valve is in the 0% stroke position. The switching point is fixed at the 0% stroke position.

Switching capacity: 24 VAC
 4A resistive
 2A inductive

Lowest recommended current: 10 mA



Remote Sending Unit

FZA21.11 The remote setting unit is a potentiometer which is used for manual control or remote setting of minimum positions of controlled devices. It is suitable for flush panel mounting only.

Control Input (R): 0 to 1,000 Ω

VAL-SRS Series
Electric Actuators
Spring Return

SPECIFICATIONS

Product	VAL-SRS07P	Proportional spring return actuator with 3/4" (20 mm) stroke
	VAL-SRS15P	Proportional spring return actuator with 1-1/2" (40 mm) stroke
Power Requirements	24 VAC ($\pm 20\%$), 50/60 Hz	
	VAL-SRS07P	18 VA Nominal
	VAL-SRS15P	28 VA Nominal
Control Input Signal	Input Y	0 to 10 VDC
	Input R	4 to 20 mA
Input Impedance	Voltage	100,000 Ω
	Current	250 Ω
Feedback Signal	Voltage	0 to 10 VDC
	Current	4 to 20 mA
Mechanical Output	Stem Up	610 lb. (2684 N) (Spring return stroke)
	Stem Down	1000 lb. (4400 N) (Power stroke)
Stroke Range	VAL-SRS07P	3/4" (20 mm)
	VAL-SRS15P	1-1/2" (40 mm)
Nominal Stroke Timing	Power Stroke	120 seconds
	Return Stroke	15 seconds for VAL-SRS07P 20 seconds for VAL-SRS15P
Enclosure	NEMA 1, Weather shield available	
Ambient Operating Conditions	5 to 130°F (-15 to 55°C), 10 to 90% RH, non-condensing, 86°F (30°C) maximum dew point	
Shipping Weight	VAL-SRS07P	18.5 lb. (8.4 kg)
	VAL-SRS15P	21.4 lb. (9.7 kg)
Agency Compliance	UL 873	
	C-UL C22.2 No. 24-93	

The performance specifications are nominal and conform to acceptable industry standards. For application at conditions beyond these specifications, consult the local Bray office. Bray Controls shall not be liable for damages resulting from misapplication or misuse of its products.

All statements, technical information, and recommendations in this bulletin are for general use only. Consult Bray representatives or factory for the specific requirements and material selection for your intended application. The right to change or modify product design or product without prior notice is reserved.

Bray CONTROLS Commercial Division

A Division of BRAY INTERNATIONAL, Inc.
 13333 Westland East Blvd. Houston, Texas 77041
 Toll Free: 888.412.BRAY(2729), FAX 281.894.9499 www.bray.com
 © 2003 Bray International. All rights reserved. VALSRS071206
 Bray® is a registered trademark of Bray International, Inc.